

# QUARTERLY CONNECTION

*Thank You!*

## CRMU Appreciates Your Business!

As a token of our appreciation, each quarter we will have small drawings for our customers. Please check the newsletter to see if you are a winner and THANK YOU for your business!

\* Prizes can be picked up at the CRMU Office.

### Quarterly Winners - CRMU Gift Pack!

The first 5 customers to mention this newsletter win a fun gift from US to YOU! Give us a call or stop by! See you soon!



Have you used **watchTVeverywhere** provided FREE by CRMU yet?

(Must be a CRMU cable TV subscriber)

Access your favorite video content through your smartphone, tablet, or laptop!

### CRMU Contact Corner



123 3rd Avenue South  
Coon Rapids, IA 50058

Monday-Friday: 7 am - 4 pm

Phone: 712.999.2225

Emergency / Outage After Hours:  
877.999.4572

Email: [info@crmu.net](mailto:info@crmu.net)

Ch. 3: [office@crmu.net](mailto:office@crmu.net)

On the Web: [www.crmu.net](http://www.crmu.net)

## Sanitary Sewer Rehab to Begin Next Spring { Rate Increase Required }

### Capital Improvement Project Information

CRMU initially constructed public wastewater collection facilities nearly 100 years ago. Several system extensions have been constructed since then, but the majority of CRMU's sanitary sewer system is comprised of 5-foot sections of vitrified clay pipe (VCP) laid end-to-end. When you divide 42,651 feet of VCP pipe by a joint every 5 feet – you get roughly over 8,500 joints that have been deteriorating over time due to grout breakdown, tree root intrusions, freeze/thaw cycles and just normal structural decay. The same can be said of CRMU's 170 manholes that are the same age and predominately brick laid.

These structural deficiencies, along with increased environmental regulations from the Iowa Department of Natural Resources (IDNR) have mandated that CRMU take corrective actions to maintain compliance with our National Pollutant Discharge Elimination System (NPDES) Permit. As part of these mandates, CRMU was required to hire an engineering firm to conduct an "engineering evaluation" of CRMU's collection system to plan for future repairs and maintenance to ensure permit compliance. CRMU was also required to submit an E. coli compliance strategy by February 1, 2020. Both the engineering evaluation and E. coli compliance strategy dictated that CRMU rehabilitate its collection system for permit compliance.

Therefore, in December of 2019, CRMU hired Veenstra & Kimm Engineering Firm (V&K) to begin the rehabilitation program. In January of 2020, CRMU awarded a bid to Hydro-Klean to clean and televise CRMU's entire collection system and V&K was hired to perform manhole inspections. After this work was completed, V&K was able to analyze the condition of CRMU's collection system and recommend improvements.

The recommended improvements consisted of point repairs to fix areas with severe structural damage, cured-in-place lining for aging clay tile, and various forms of rehabilitation for the manholes depending upon the deficiencies noted during the inspections at a projected cost of \$2.74 million. In May of 2020, CRMU submitted its "Facility Plan" and Intended Use Application "IUP" for State Revolving Fund (SRF) project financing. CRMU's Facility Plan was approved by the IDNR in July of 2020 along with authorization to proceed with the recommended improvements as detailed in the facility plan.

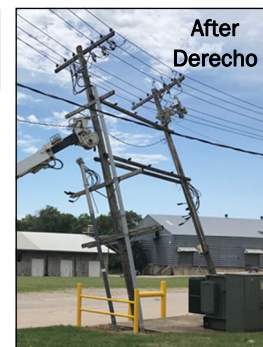
To help offset the project's capital costs, CRMU immediately started the process of applying for a Community Development Block Grant (CDBG) in the amount of \$500,000. If approved, these funds will be used to lower the amount of financing needed from the SRF fund. CRMU also anticipates utilizing some reserve funds to lower the project's capital cost.

Based upon the engineer's estimated project cost, CRMU will need to finance around \$2.1M for the project. When added together with the annual operating deficit and increased depreciation expenses, CRMU's additional annual revenue requirement will be approximately \$200,000 which roughly equates to a \$27/month increase per customer. CRMU expects the new rates to go into effect a few months after bids for the project are received in January of 2021.

CRMU hopes to offset a \$2.74 million wastewater improvement project with a Community Development Block Grant (CDBG). "Thank You" to all customers who were asked to complete the Region XII Income Survey. Your participation was vital to our CDBG grant application.

## Derecho Storm Damage

CRMU's distribution facilities survived the August 10th, 2020 derecho storm - except for a couple structures on our Hybrid 1 & 2 circuits that feed the Hartung facilities in town. CRMU staff removed the two broken structures in the picture and transferred the lines onto a new pole that was set. Staff is currently working on the design to convert these remaining overhead facilities to underground in the near future.





# PROJECT CARE PROGRAM

## HELPING THOSE IN NEED

Every month, there are people who struggle to pay their utility bill due to unexpected medical emergencies, unemployment, or life circumstances. Project Care is supported entirely by voluntary contributions from you, our customers. ALL funds donated are managed by a committee of local community members for distribution once a year to CRMU customers who need assistance with their utility bills.

**100% of donations stay in Coon Rapids!!**

### Yes, I'd like to contribute to Project Care!

Name: \_\_\_\_\_

Address: \_\_\_\_\_

City / State: \_\_\_\_\_

Please return to CRMU:  
Coon Rapids Municipal Utilities  
PO Box - Coon Rapids, IA 50058

*Project Care is a simple way to make a big difference!  
Thank you for contributing!*

### I would like to enroll in:

- Project Care Round-Up:** Round my bill up to the next whole dollar and contribute the rounding amount to Project Care. *This option is not applicable to budget customers.*
- Project Care Monthly Pledge** of \$ \_\_\_\_\_ added to my bill each month.
- Project Care Donation:** I would like to make a flat donation of \$ \_\_\_\_\_ to Project Care.
  - Add to my next bill.
  - Check enclosed.

## 2020-2021 IOWA HOME ENERGY ASSISTANCE PROGRAM



**ATTENTION: RESIDENTIAL CUSTOMERS  
NEED HELP WITH YOUR HEATING BILL?**



The 2020-2021 Low-Income Home Energy Assistance Program (LIHEAP) has been established to help qualifying low-income Iowa homeowners and renters pay for a portion of their primary heating costs for the winter heating season.

The assistance is based on household income, household size, type of fuel, and type of housing.

If you are not sure where to apply, Dial 2-1-1, or visit <https://humanrights.iowa.gov/dcaa/where-apply> to contact your local community action agency, or write to:

LIHEAP  
Iowa Department of Human Rights  
Capitol Complex  
Des Moines, IA 50319



**Call New Opportunities at  
712-792-2832**

### INCOME MAXIMUMS

Household Size	Annual Gross Income
1	\$22,330
2	\$30,170
3	\$38,010
4	\$45,850
5	\$53,690
6	\$61,530
7	\$69,370
8	\$77,210

For households with more than eight members, add \$7,840 for each additional member.

### WHEN TO APPLY:

**Elderly (60 & over) and/or disabled:**

October 1, 2020 to April 30, 2021

**All other households:**

November 1, 2020 to April 30, 2021

### WHAT TO TAKE:

- **Proof of Income (for all household members age 19, and over)**  
Depending upon your household income type, income documentation from the past 30 days, the last 12 months, or last calendar year, whichever is easier or more beneficial for you.
- **Social Security numbers for all household members**  
(documentation required)
- **Most recent heat bill**
- **Most recent electric bill**

### WAGE EARNERS:

Please bring copies of your check stubs for the 30-day period preceding the date of application, or a copy of your most recent federal income tax return.

### FIXED INCOME:

This income may include: Social Security Benefits, Supplemental Security Income, Family Investment Program, Veteran's Assistance, Unemployment Insurance, and pensions. Please bring copies of your check stubs from the previous 30 days.

### SELF-EMPLOYED/FARMERS:

Please bring a copy of your most recent federal income tax return.

### FIP RECIPIENTS:

Please bring your current DHS Notice of Decision or contact your local office for acceptable document information.

**If you receive alimony or child support, it will also need to be verified. Additional income not listed here may be required.**